



# Shutter Release

A newsletter for members of the International Photographic Society

January 2012

## Inside this issue

	<u>Page</u>
Presidents Notepad.....	2
January Speaker/Judge.....	2
December Speaker .....	3
Call for entries .....	4
PSA Corner .....	4
Competition Rules.....	5
December's Winning Images.....	8
December's Results.....	11
Points Standing.....	12
Notes on IPS Competitions.....	13
Council/Volunteers.....	14
Competition Entry Form.....	15
Membership Application Form.....	16

## UPCOMING EVENTS

- January 2012: Flash Workshop
- February/March 2012: Photoshop Workshop
- May 2012: Annual Exhibition

### Welcome New Member

Kemal Cakici  
 Jacqueline Campbell  
 Jungsoo Kim  
 Naly De Carvalho

## NEXT MEETING

### Wednesday, January 18, 2012

Social & Refreshments: 5:45 p.m.

Presentation at approx. 6:30 p.m.

**IMF Auditorium, RD-710**

700 19<sup>th</sup> Street, NW, Washington, D.C.

## January Speaker

Michael Cunningham

**“The idea, the exhibition,  
the book, the state play”**

---

## January EIC & Print Theme: PEOPLE (Mandatory)

---

### Note to Contestants:

Please bring print entries to the meeting with entry form appended at the end of this issue.

Entries will be accepted between 5.45 and 6.15 pm ONLY.

For inquiries please call Ashish Bhateja  
(202) 473 4772



IPS is a member club of the Photographic Society of America ([www.psa-photo.org](http://www.psa-photo.org))

---

## Presidents Notepad

---

Dear IPS members,

Happy New Year and Best Wishes for 2012. I hope you all enjoyed the break with your family and friends.

The Pot Luck Dinner and gift exchange on December 21 was a great success—it was lovely to see so many members in attendance. There were many delicious dishes for everyone to enjoy (thanks to Denyse Morin for coordinating everything) and it was nice to see most people exchanged a gift of one of their images. Thank you again to everyone who participated in the event.

In January (17 and 24) we will be providing a 2 session **Ron Aira Workshop on “Flash Photography”**. This workshop is aimed at new photographers and is a follow-on from Ron’s November workshop on “Digital Photography”. **If you wish to participate, please email [ABhateja@worldbank.org](mailto:ABhateja@worldbank.org).**

You should also have received an email from me in late December and a reminder in January regarding the ‘Call for Entries’ to the **IPS Exhibition (in October 2012) at the Academy Art Museum in Easton, Maryland** (see: [www.academyartmuseum.org](http://www.academyartmuseum.org)). **Please submit your images to Bass Sarr ([BSarr@msn.com](mailto:BSarr@msn.com)) no later than Wednesday, February 1, 2012 – see page 4 for submission details.**

I trust you have all received my email on a **Survey** of membership needs/skill levels in relation to Photoshop? We are planning to provide a workshop on this program in February or March — several members have expressed an interest in such a class. The information you provide will assist us in designing the workshop with the presenter — so **please complete the short Survey at your earliest convenience**. Even if you don’t take this workshop, the information you provide will be invaluable in planning for future workshops.

In the next few months we will begin planning for our Annual Exhibition in May. The cut-off point for images in this year’s exhibit will be the February 15 meeting. Winning images from March/April/May will be displayed in next year’s exhibit. This is done to ensure the images are printed/matted/catalogued in time for the exhibit, and as you know April is an extremely busy time for the IMF graphics department – whose priority is the IMF Spring Meetings work so we have to submit the request early.

Please look out for these Annual Exhibit emails, to ensure you do not miss any deadlines. We are delighted to have Susann Tischendorf as our Annual Exhibit Director this year. Susann will be in touch in the coming weeks/months regarding the organizing of our 2012 Exhibition.

Mary Wilson  
IPS President

---

## January Speaker

---

### Michael Cunningham

#### “The idea, the exhibition, the book, the stage play”



Michael Cunningham was born in Landover, Maryland and fell in love with photography at an early age. A commercial photographer for over sixteen years, his clients have included some of world’s largest corporations: Coca-Cola, RJR Tobacco, Sara Lee, Wachovia Bank, among others.

When not working commercially, Cunningham chooses to work in black and white; this allows him to express what is in his soul.

Black and white photography is very personal, he says and reaches deep inside the viewer, making them study the photograph for what it represents outside of pretty colors.

In an effort to give back to other young people, like himself, interested in photography, Cunningham has served as an instructor for the Winston-Salem/Forsyth County Arts Council’s ARTIVA Program, an artist apprenticeship that allows high school students to work hand-in-hand with various artists for eight weeks during the summer. He also taught photography at Winston-Salem State University in Winston Salem, NC.

In ‘98, Cunningham produced a traveling exhibition, **CROWNS: Portraits of Black Women in Church Hats**. The Smithsonian’s Anacostia Museum featured the images from CROWNS in their *Locating the Spirit in African-American Art*.

In the fall of 2000, Doubleday published a coffee table book on the **CROWNS** series co-authored by journalist Craig Marberry. The book has received enormous national media attention including coverage in *The New York Times*, *USA Today*, and The CBS News Sunday Morning Show. Now in its seventh printing, **CROWNS** has sold over 120,000 copies. Additionally, a calendar was released in 2002 and 2003 by Workman Publishing. A theatrical production of **CROWNS** has played to sold out audiences across the U.S. and Canada, and is currently still on tour.

---

Since the release of **CROWNS**, Cunningham has made dozens of presentations at museum workshops, sorority luncheons, fund-raising banquets, and venues around the country, presenting in Dallas, TX; Richmond, VA; Toledo, OH; Charlotte, NC; Chicago, IL; Wichita, KA; Houston, TX; Louisville, KY; New York, NY; Omaha, NE; Detroit, MI; and Miami, FL. Cunningham has also lectured at the Studio Museum in Harlem; California Institute of Technology in Pasadena, CA; Rogers Williams University in Bristol, Rhode Island; The Virginia Festival of the Book; The American Textile Museum in Lowell, MA; and the National Association of Colored Women's Clubs.



In fall 2003, Doubleday released his second book with co-author Craig Marberry entitled, **Spirit of Harlem: Portraits from America's Most Exciting Neighborhood**.

Michael's third book project **Queens: Portraits of Black Women and Their Fabulous Hair**, a photo essay book with journalist George Alexander, takes a look at the unique relationship of Black women and their hair. Photographed on location in Accra, Ghana, London, England and up and down the east coast of the USA. It was released by Doubleday in 2005.

Michael's latest photo essay book, **JEWELS**, a collaboration with best selling author, Connie Briscoe, features fifty phenomenal women over fifty like Ruby Dee, Eleanor Holmes Norton, S. Epatha Merkerson and Marian Wright Edelman. It was released 2007 by Hachette/ Bulfinch Press.

In addition, Cunningham is the Executive Director of Urban Shutterbugs, a nonprofit organization aimed at teaching the fine art of black and white photography to inner-city youth. Cunningham is a member of American Society of Media Photographers (ASMP), and a past board member of the Washington, DC chapter. He attended Winston-Salem State University and the University of North Carolina at Greensboro. He has one daughter, Kamari, who is sixteen years old. He resides in Washington, DC.

*by Carmen Machicado*

---

## December Speaker

---

### Susan Bloom “Interpretations”

It has been several years since Susan Bloom came to IPS, so it was nice to see her back again for our December meeting. I remember the last presentation was very informative and inspirational and her return visit was the same.

If you know Susan's work, you will know she is a fine art photographer who uses various techniques to achieve her final images, many of which look very unlike a photograph—as Susan said she doesn't really do “straight photography” and has spends a lot of time on infra red and other techniques of digital manipulation. Susan's approach is to think of an artist with an imaginary tool belt, who grabs the tool for the mark they want to make. She says that we as photographers make marks which are meaningful to us and others.

She began her presentation by showing us hieroglyphics and early cave drawings, to show the marks previous humans have made and left for us. Susan studies painters and encourages us to attend art galleries to study masters such as Degas, Rodin, etc. She feels a lot can be learned from these artists about ‘simply seeing’.

In addition to her study of the great masters, she has been at the forefront of modern technology, being one of the first users of a MAC (since 1984). Susan is a data tester for Photoshop and is currently assessing some new products which she was not able to tell us about just yet, but which will be coming soon and she promise will be exciting.

Susan's newest venture is into iPad and iPhone Apps – her enthusiasm for what these programs can provide is considerable. She says it is “fun and gives you creative juices” adding that she plays around with the Apps and exercises her artistic license.

Susan's final words of wisdom were: “learn from the masters, take a workshop, read books, watch webinars, go to museums, take a drawing class – this will slow you down and make your eyes keener. Ask yourself who's voice to I need to hear next?”

If you would like to see more of Susan's work, please go to [www.suebloom.com](http://www.suebloom.com).

*by Mary Wilson*

---

## Call for Entries:

---



## PSA Corner

---

### Call for submissions from IPS members for a juried exhibition

IPS has been contacted by the Academy Art museum in Easton, MD [www.academyartmuseum.org](http://www.academyartmuseum.org) for an exhibition opportunity to be hosted in the museum atrium. The exhibit will run from October 5–14, 2012. It will be part of a town-wide celebration including various seminars, art shows, and other exhibits. IPS participation will be in the form of photo exhibit on the theme of Women and Children of the World.

The museum curator will select 30–35 images from our digital submission. Once the museum selects the final group of 30-35 images, you will be required to print, matt, and frame the selected photo for the exhibit. Please note that the museum will not assume any expenses for printing, matting, framing so consider the overall cost when you submit your images. The museum will provide IPS free space, hanging and labeling.

**Deadline for submission of entries is February 1<sup>st</sup> 2012**

Each member will be permitted to enter a maximum of 5 images in digital format (max. size of image should not exceed 1.5 MB with maximum horizontal 1400 pixels and vertical 1050 pixels).

Submission is by email as file attachment to [EIC@imfwb-ips.org](mailto:EIC@imfwb-ips.org) email address. The subject line of the submission should read Easton Museum Entry

This is a major opportunity for IPS members to exhibit their work.

Bass Sarr [bsarr@msn.com](mailto:bsarr@msn.com) has agreed to coordinate IPS' submission and will be our main contact for this event.

Dear Shutter Release readers,

Greetings of the New Year! Through 2011, PSA continued improving its website redesign to make it easier to navigate. A new section that has been introduced is latest Society News which is updated several times a week. Go to [psa-photo.org](http://psa-photo.org) and look in the right-hand column to check this out.

The journal this month shares fun moments from PSA's 73rd Annual Conference held at Colorado Springs in September 2011. The next conference is scheduled in San Francisco, California on September 16-22, 2012 and promises to continue focusing on photographic education and many photographic opportunities.

The *Distinctive Image Artist* series features PSA Dr. Lloyd McCarthy who shares his images and techniques for shooting Wildflowers. A photo-journal covers The Antelope Valley Area near Page, Arizona (Slot Canyons) which has become one of the most photographed areas of the Western United States. For those of us who are intrigued by the Black and White images, there is an article on how Black and White photography can take the simplicity of a subject and transform it into a dramatic expression of that subject making it a rewarding experience for the viewers.

The *Drury's Digital Diary* October column concluded a 4-column sequence covering Adobe Camera Raw. The next set in this series talks about the Picture Postcard Workflow, a technique requiring 5 minutes/image to optimize vacation photos into a result, which is more color accurate, colorful and pleasing to the viewer. Practice images are available to readers who like to work along with the techniques described in the column.

The *Just for Beginners* section mentions a few Mnemonics that can be useful for those upgrading from their snapshots. FAST, for example, can be a reminder for major camera settings. Focus, Aperture, Shutter speed, and then Take the picture. Many a photo could be improved by checking and changing the F, A, or S before the T. The camera's centered point of Focus may not be the desired spot. The chosen Aperture may not produce the desired depth of field. The chosen Shutter speed may stop the action when a sense of movement was desired. Then, Take the picture!

Keep an eye on this space for more announcements from PSA in 2012!

For more details and useful information, do visit <http://psa-photo.org/>.

*by Ashish Bhateja*

---

## COMPETITION RULES REVISED

---

### INTERNATIONAL PHOTOGRAPHIC SOCIETY COMPETITION RULES *(Revised November 2011)*

#### I. GENERAL

1.1 These rules apply to all photographic competitions sponsored by the International Photographic Society (IPS). They are adopted, and may be amended, in the same manner as the IPS By-Laws.

1.2 Only members of the IPS can participate in IPS-sponsored competitions.

1.3 The following are competitions sponsored by the IPS:

**Monthly competitions;  
Preselection competition;  
Annual Exhibition competition;**

1.4 The competitions are held under the responsibility of the Chairperson for Competitions; or, in his or her absence, the person designated for the purpose by the President, except for the Annual Exhibition Competition, which is held under the responsibility for the Chairperson for Special Events. All decisions of the person responsible for a competition shall be final, except that a contestant dissatisfied with a decision of the responsible person may request, not later than two weeks after the decision, a ruling by the Executive Council, whose decision shall be final.

1.5 For all electronic image competitions, submitted image files, not to exceed 1.5 MB in size, must be in JPEG format (i.e. with JPG extension) and in sRGB color space (even if monochrome) with a maximum horizontal size of 1400 pixels and maximum vertical size of 1050 pixels.

1.6 For all print competitions, prints must be mounted on a board not exceeding 20 x 20 inches, with the image not exceeding 17 x 17 inches. A print must have a white overlay matt securely fixed to the mount.

1.7 Unless otherwise notified, contestants must submit electronic images to IPS by email only, as file attachments (not embedded) no later than midnight on the Saturday immediately preceding the competition day. Confirmation emails will be sent at least 24 hours before the

competition. Three weeks after the competition date images will be deleted except for winning images, which shall be kept for archival and promotional purposes.

1.8 Unless otherwise notified, contestants must deliver their print entries to the Chairperson at least half an hour before the competitions commence. Entries must be collected by the contestant after the competitions are held. Any uncollected entries will be retained by the Chairperson without any liability whatsoever for their safekeeping.

1.9 In any competition, the image presented must be, or be based on, an original photograph or combination of photographs taken by the member. A contestant may enter only one picture of essentially the same image. No other picture taken at about the same time, of the same subject, from the same position, and under similar lighting, may be entered in the same competition.

1.10 The IPS shall exercise all reasonable care in the handling and storage of entries, but the IPS accepts no responsibility for any loss of, or damage to, an entry.

#### II. MONTHLY COMPETITIONS

2.1 The Executive Council determines and publishes before the beginning of the season, which runs from September through May:

- (a) the dates of the monthly competitions may be changed and members notified in the course of the season if this becomes necessary in the judgment of the Executive Council;
- (b) the type of competitions such as prints, and electronic by class that will be held each month, as well as the theme;
- (c) the maximum number of entries which each contestant may submit each month is 5. The maximum entry in each media is limited to 3.

2.2 A picture should be entered in an IPS monthly competition no more than three times in one calendar year. Winners from a monthly competition, including honorable mentions, cannot be resubmitted. Winners from the Preselection competition can no longer be entered in monthly competitions.

2.2 Contestants are divided into two classes: Class B and Class A.

Class B will comprise:

- (a) members who have never entered a competition in the IPS;
- (b)

- 
- (c) members who have won fewer than thirteen awards while competing in Class B.

Class A will comprise:

- (a) members who have been promoted from Class B as having won thirteen awards while competing in Class B; and
- (b) members to whom Rule 2.4 applies.

2.3 Class A members, who rejoin the IPS after an absence, will retain the class standing at the time of their departure.

2.4 Competitions may be held within each class or between all classes combined. For the purposes of determining the classes and movements between classes, awards won in the monthly competitions, the Annual Exhibition, and the Preselection competition are taken into account.

2.5 Points System: Regardless of the number of entries submitted, each contestant entering a monthly competition receives 5 points – even if there are not enough entries to actually hold that competition.

2.6 IPS awards are given for the best fifteen percent (rounded to the nearest whole number) of entries in each competition or in each class within a competition that is run in classes. These awards, and the points they earn are:

- (a) Places, meaning those pictures judged first, second and third which earn 5, 3, and 2 points respectively; and
- (b) Honorable Mentions, meaning all other pictures selected for award which earn 1 point each

2.7 If, in any competition, there are fewer than five entries, or fewer than three contestants, there shall be no competition. If this is the case in class competitions, entries received for Class B shall be included with the entries of Class A; entries received for Class A will be displayed without competition.

### III. THE ANNUAL EXHIBITION

3.1 For each season, the Executive Council shall determine or delegate the Manager of the Annual Exhibition to determine:

- 1. the dates of the Annual Exhibition;

- 2. the total number of prints to be exhibited, the maximum number of electronic images, or prints members may submit for Preselection, and the number of pictures to be chosen by Preselection;
- 3. the members of the Preselection panel and the Annual Exhibition jury;
- 4. the deadline for submitting pictures;
- 5. the amount to be paid by members to cover the cost of printing, mounting, handling, and other costs associated with the Annual Exhibition.

3.2 The Annual Exhibition shall consist of one single category, irrespective of the original media of the photograph.

3.3 The following entries submitted by members shall be exhibited and shall be considered for award:

- (a) All winners of awards in monthly competitions since the last Annual Exhibition;
- (b) All electronic images and prints submitted by members, which have been selected by the Preselection panel.

3.4 A picture may not be exhibited more than once, even if entered in a different category, or if it qualifies under a different rule (e.g., a picture exhibited as an electronic image one year may not be exhibited as a print in another year, a monthly winner may not be exhibited as such one year, and be submitted to the Annual Exhibit Preselection panel in another year).

3.5 Annual Exhibition Competition. All entries will be judged in one category. Fifteen percent of the entries will receive awards, which shall be, at a maximum, a first, second, and third place, and as many honorable mentions (not ranked among themselves) as required to give awards to fifteen percent of entries.

3.6 Winners of places or honorable mentions in the Preselection competition as well as the Annual Exhibit win points as in Rule 3.7 below.

3.7 Points system for non-monthly competitions: winners of places or honorable mentions in the Annual Exhibition, the Preselection competitions, or any other competition sponsored by the IPS, will be awarded points as follows:

- (a) for first, second, and third place winners: 7, 5 and 4 points respectively;
- (b) for honorable mentions: 2 points

---

#### **IV. PHOTOGRAPHY/ROOKIE OF THE YEAR**

4.1 At the end of the season, points earned by each member in a season are added. The member awarded the highest number of points in the season will be declared Photographer of the Year. Second and third place awards will also be made.

4.2 New members who have joined the IPS during the current or the previous season shall be eligible for the Rookie of the Year award. Members who, at any time previously, have attained Class A status are not eligible.

4.3 Second and third place awards will also be made. If the Rookie of the Year also has enough points to qualify for first place in the Photographer of the Year he/she will be declared Photographer of the Year and the Rookie of the Year award will go to the eligible members with the next highest points. If the Rookie of the Year also has enough points to qualify for second or third place in the Photographer of the Year award he/she will be declared Rookie of the Year; and second and third places will then go to the members, as defined in paragraph 4.2, with the next highest points.

**(Adopted March 1966, and amended August 1966, March 1968, October 1969, October 1971, September 1979, November 1979, September 1981, May 1984, October 1986, February 1987, February 1988, March 1989, October 1989, May 1991, September 1991, May 1992, May 1998, June 2000, May 2004, August 2007, and March 2008, August 2009 and November 2011)**

---

## December 2011—Winning Images



*Well Guarded Bike* © Louise Forest Sarr



*Guggenheim Interpretation 2* © Emine Gurgun



*Fountainhead* © Emine Gurgun



*Fisherman Cove Punta Gorda* © Bass Sarr



*Woodland* © Jean Boyd



*Little Fairy Visiting* © Alex Ergo



---

**December 2011 — Winning Images (cont'd)**



*Grills Have No Hostage No More Washington DC* © Karel Leon



*Dutch Ride* © Stephan Egli



*Untitled 33* © Jihad Dagher



*Coline 1* © Alain Cornet



*Echo* © Caroline Plante



*Rice and Palms* © Denyse Morin

---

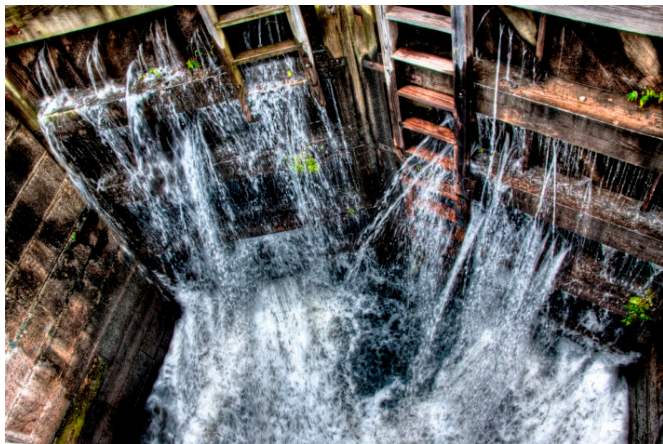
## December 2011 — Winning Images (cont'd)



*Man and Horse* © Alex Hoffmaister



*Metro Ride 2* © Alex Hoffmaister



*Bursting at the Seams* © Ceyda Oner

## December 2011 Results

<b>Electronic Image Competition-Theme: OPEN (Group A – 41 Entries)</b>		
<b>1<sup>st</sup> place</b>	Louise Forrest Sarr	Well Guarded Bike
<b>2<sup>nd</sup> place</b>	Bass Sarr	Fisherman Cove Punta Gorda
<b>3<sup>rd</sup> place</b>	Emine Gurgun	Guggenheim Interpretation 2
<b>HM</b>	Jean Boyd	Woodland
<b>HM</b>	Alex Ergo	Little Fairy Visiting
<b>HM</b>	Emine Gurgun	Fountainhead
<b>Electronic Image Competition-Theme: OPEN (Group B – 39 Entries)</b>		
<b>1<sup>st</sup> place</b>	Alain Cornet	Coline 1
<b>2<sup>nd</sup> place</b>	Denyse Morin	Rice and Palms
<b>3<sup>rd</sup> place</b>	Karel Leon	Grills Have No Hostage No More Washington D.C.
<b>HM</b>	Jihad Dagher	Untitled 33
<b>HM</b>	Stephan Eggli	Dutch Ride
<b>HM</b>	Caroline Plante	Echo
<b>Prints Competition—OPEN (Group A– 16 Entries)</b>		
<b>1<sup>st</sup> place</b>	Alex Hoffmaister	Metro Riding 2
<b>2<sup>nd</sup> place</b>	Alex Hoffmaister	Man and House
<b>Prints Competition—OPEN (Group B – 7 Entries)</b>		
<b>1<sup>st</sup> place</b>	Ceyda Oner	Bursting at the seams

### Competition Reminder

**No comments or interruptions of any kind from the audience are allowed under any circumstances.  
Q and A session will follow the judging**

## POINTS STANDINGS 2011/2012 SEASON

Last Name	First Name	Class Opening	Sept. 2011	Oct. 2011	Nov. 2011	Dec. 2011	Jan. 2012	Feb. 2012	March 2012	April 2012	Annual Exhibit 2012	May 2012	Total
Hoffmaister	Alex	A	14	11	10	13							48
Eggl	Stephan	B	8	6	10	6							30
Rani	Manorama	A	5	14	6	5							30
Dagher	Jihad	B	7	10	5	6							28
Kundu	Pritthijit (Raja)	B	11	5	6	5							27
Nguyen	Khai	A	11	5	5	5							26
Thurein Win	Aung	B	5	5	11	5							26
Forest-Sarr	Louise	A	5	5	5	10							25
Palmioli	Manuella Lea	A	5	5	10	5							25
Pelland*	Suzanne	B	10	5	5	5							25
Gürgen	Emine	A	5	5	6	8							24
Machicado	Carmen	A	8	6	5	5							24
Morin	Denyse	B	5	5	6	8							24
Titsworth Morin	Raphaël	A	5	8	6	5							24
Ergo	Alex	A	5	7	5	6							23
Boyd	Jean	A	5	5	6	6							22
Sarr	Bassirou	A	5		8	8							21
Franzetti	Carlos	A	5	5	5	5							20
Oner*	Ceyda	B	5	5		10							20
Sanghani	Chirag	B		10	5	5							20
Titsworth	Jack	B	5	5	5	5							20
Voytsehovska	Galina	B	5	5	5	5							20
Wilson	Mary	A	5	5	5	5							20
Cochard	Fred	A	7		5	5							17
Lumanau*	Angela	B	6	6	5								17
De Corte	Gerda	A	6		5	5							16
Akchurin	Alexandra	B		5	5	5							15
Eken	Sena	B	5	5		5							15
Egan	Michelle	B		5	8								13
Plante*	Caroline	B			5	6							11
Cornet*	Alain	B				10							10
Leon*	Karel	B				7							7
Xiao	Yuan	A			7								7
Arin	Tijen	A		5									5
Daberko*	Christopher	B	5										5
Kuhn*	Amy	B	5										5
Maslova*	Viktoriya	B			5								5
Quesnel	Richard	B	5										5

\* Eligible for Rookie of the Year

Please check your awards & score. For questions, email Manuella Lea Palmioli @ [mpalmioli@worldbank.org](mailto:mpalmioli@worldbank.org)

## NOTES ON IPS COMPETITIONS

- Dates may be subject to change.
- IPS meetings are usually held on the third Wednesday of the month, consisting of a presentation by a renowned photographer who also judges the competition that follows.
- Only IPS members may participate in competition, but attendance in meetings is open to non-members.
- The monthly theme applies to EIC competition only, not to prints (except in January, the mandatory theme is “People” in all Mediums).
- In January, the mandatory theme is “People”.
- Open competitions are on any subject matter in classes B & A.
- Up to a total of 5 images may be submitted, with a max. of 3 images per competition (EIC and Print).
- Five points are awarded for entering the monthly competitions, regardless of the number of entries members actually enter.

### CLASSES — B AND A

All new members begin in class B. Promotion to class A requires 13 awards. Members should keep track of their classes to avoid errors.

### THE POINTS SYSTEM

- **5 points** automatic for entering monthly competition;
- **5 points** for 1<sup>st</sup> place;
- **3 points** for 2<sup>nd</sup> place;
- **2 points** for 3<sup>rd</sup> place;
- **1 point** for Honorable Mention.

In addition, points are given for awards in non-monthly competitions, including the IPS Annual Exhibit and exhibit pre-selection, as follows:

- **7 points** for 1<sup>st</sup> place;
- **5 points** for 2<sup>nd</sup> place;
- **4 points** for 3<sup>rd</sup> place;
- **2 points** for Honorable Mention.

At the end of the season, those with the most points win 1<sup>st</sup>, 2<sup>nd</sup> and 3<sup>rd</sup> place as **Photographer of the Year**. There is also an award for new members who start off in B Class and who gain the most points; it's called **Rookie of the Year**.

### Art 1.7 of the IPS Competition Rules

“Unless otherwise notified, contestants must deliver their print entries to the Chairperson [for Competitions] at least 30 minutes before the competitions commence. Entries must be collected by the contestants after the competition is held. Any uncollected entries will be retained by the Chairperson [for Competitions] without any liability whatsoever for their safekeeping.”

## IPS Competition Themes for 2011/2012

Kindly check Shutter Release or IPS Website [www.ips-imfwb.org](http://www.ips-imfwb.org) for latest updates

**September 21, 2011: Motion** — Images should capture motion.

**October 19, 2011: OPEN** in all competitions

**November 16, 2011: Animals** — The main subject should be any animal (excluding humans).

**December 15, 2011: OPEN** in all competitions.

**January 18, 2012: PEOPLE (Mandatory)** — Defined as images in which the major point of interest is one or more human beings. It is not sufficient that people are merely included in the image. Excluded are photos of statues, mannequins.

**February 15, 2012: OPEN** in all competitions.

**March 21, 2012: WHITE** — image should have white as the dominant color.

**April 25, 2012: OPEN** in all competitions.

**May 16, 2012: INSIDE OUT or UPSIDE DOWN –Revised Definition**--The main subject that normally is inside now faces outwards or the subject is upside down

**\*Dates may change dependent on Circumstances outside of our control.**

to be inserted in your camera bag



<b>☐ IPS EXECUTIVE COUNCIL ☐</b>			
President	Mary Wilson	(202) 623 0004	<a href="mailto:Mwilson2@imf.org">Mwilson2@imf.org</a>
Vice-President	Stephan Eggli	(202) 458 5296	<a href="mailto:seggli@worldbank.org">seggli@worldbank.org</a>
Treasurer	Aung Thurein Win	(202) 623 5685	<a href="mailto:AWin@imf.org">AWin@imf.org</a>
Program Directors	Hannah Faux Alex Hoffmaister Carmen Machicado	(202) 623 5883 (202) 473 5761	<a href="mailto:hmfaux@gmail.com">hmfaux@gmail.com</a> <a href="mailto:AHoffmaister@imf.org">AHoffmaister@imf.org</a> <a href="mailto:Cmachicado@worldbank.org">Cmachicado@worldbank.org</a>
Membership Director	Mary Wilson	(202) 623 0004	<a href="mailto:Mwilson2@imf.org">Mwilson2@imf.org</a>
Print Competition Director	Manorama Rani	(202) 473 2057	<a href="mailto:MRani@worldbank.org">MRani@worldbank.org</a>
EIC Projection Director	Alex Ergo Magally Bernal	(240) 422 3039 (202) 623 5615	<a href="mailto:alexergo@broadbranch.org">alexergo@broadbranch.org</a> <a href="mailto:mbernal@imf.org">mbernal@imf.org</a>
Hospitality Director	Denyse Morin	(202) 458 4219	<a href="mailto:dmorin@worldbank.org">dmorin@worldbank.org</a>
Webmaster	Marina Tyapkina	(202) 623 6437	<a href="mailto:MTyapkina@imf.org">MTyapkina@imf.org</a>
<b>☐ IPS VOLUNTEERS ☐</b>			
Awards and Trophies	Sigrid Vollerthun		<a href="mailto:svollerthun@verizon.net">svollerthun@verizon.net</a>
Workshops/Field Trips	Ashish Bhateja	(202) 473 4772	<a href="mailto:abhateja@worldbank.org">abhateja@worldbank.org</a>
Curator of HQ1/HQ2 Tunnel Exhibit	Magally Bernal	(202) 623 5615	<a href="mailto:mbernal@imf.org">mbernal@imf.org</a>
PSA Representative	Ashish Bhateja	(202) 473 4772	<a href="mailto:abhateja@worldbank.org">abhateja@worldbank.org</a>
Publicity	Jihad Dagher Bill Katzenstein Suzanne Pelland	(202) 623 9482 (202) 458 9525	<a href="mailto:jdagher@imf.org">jdagher@imf.org</a> <a href="mailto:Bill@IconicPhoto.com">Bill@IconicPhoto.com</a> <a href="mailto:spelland@worldbank.org">spelland@worldbank.org</a>
Annual Exhibit Coordinator	Susann Tischendorf	(202) 458 5802	<a href="mailto:STischendorf@worldbank.org">STischendorf@worldbank.org</a>
<b>☐ SHUTTER RELEASE ☐</b>			
Editors	Magally Bernal Zijing Niu	(202) 623 5615	<a href="mailto:mbernal@imf.org">mbernal@imf.org</a> <a href="mailto:zniu@worldbank.org">zniu@worldbank.org</a>
Presentation Write-Ups	Jack Titsworth Stephan Eggli Sena Eken	(202) 473 2830 (202) 458 5296	<a href="mailto:jtitsworth@worldbank.org">jtitsworth@worldbank.org</a> <a href="mailto:seggli@worldbank.org">seggli@worldbank.org</a> <a href="mailto:senaeken@gmail.com">senaeken@gmail.com</a>
<p><b><i>SHUTTER RELEASE</i> welcomes article ideas and submissions from club members. Unless specified otherwise by e-mail, the deadline for submissions is close of business on the last business day of the month prior to the issue month. Please send submissions by e-mail to the <a href="mailto:editor@imfwb-ips.org">editor@imfwb-ips.org</a> as unformatted word or text files. If you wish to add images, please make sure that the longest side does not exceed 800 pixels.</b></p>			

---

# INTERNATIONAL PHOTOGRAPHIC SOCIETY

## COMPETITION ENTRY FORM

*(Please complete and submit with your entries)*

---

Name: \_\_\_\_\_ Class: \_\_\_\_\_  
 Room: \_\_\_\_\_ Phone: \_\_\_\_\_ Month: \_\_\_\_\_  
 Theme: \_\_\_\_\_

Note: Monthly competition winning photos will be used on the IPS web site and in “Shutter Release” Newsletter. If you do **not** wish to have your images posted on the website or in *Shutter Release* please indicate by checking the box:

	Title	Category (check one for each photo)			
		Print		EIC	
		Theme	Open	Theme	Open
1				<b>No form required</b>	
2					
3					
4					
5					
<b><i>Five entries per member. Maximum of 3 entries per medium (EIC and Print)</i></b>					

### GUIDELINES FOR SUBMISSION

#### PRINTS

- All prints must be mounted or matted, with the title of the photo and the name of the maker affixed on the back along with an arrow indicating this edge up. Neither the name of the maker nor the title of the print may appear on the face of the print or mat. Mats that fall apart will be disqualified. No loose or framed prints will be accepted for competition.
- Maximum size of mounted or matted prints is 20x20.

#### DIGITAL

All images must be sent to [EIC@ips-imfwb.org](mailto:EIC@ips-imfwb.org), Friday before the IPS meeting which takes place on 3<sup>rd</sup> Wednesday of each month.

---

# INTERNATIONAL PHOTOGRAPHIC SOCIETY

## MEMBERSHIP APPLICATION\*

Annual Membership Fee: \$30. Please send checks, payable to the *International Photographic Society*, to: Marina Tyapkina (IMF), Room HQ1 02-200, 700 19<sup>th</sup> Street, NW, Washington D.C. 20431

[www.ips-imfwb.org](http://www.ips-imfwb.org)

NEW APPLICATION

RENEWAL

Last Name: \_\_\_\_\_ First Name: \_\_\_\_\_

IMF    World Bank    Spouse/Domestic Partner    Retiree (**please check one**)

Phone No.: \_\_\_\_\_ Mail stop: \_\_\_\_\_

Email: \_\_\_\_\_ (**required**)

Mailing address (if outside Fund/Bank): \_\_\_\_\_

---

**IPS is run solely by member volunteers.** We rely on each member to volunteer for **at least one** activity per year (several volunteers are needed for each item). **Please indicate below which activities you can help with:**

### I can volunteer for the following activities:

- Annual Exhibit—assist with all aspects of organizing the exhibit
- Classes/Workshops/Field Trips—assist in the organization of these educational events
- Monthly Electronic Image Competition—receive images via e-mail, compile into slide show and run on competition night
- Hospitality—assist with refreshments prior to our monthly meetings
- Membership—maintaining database of members, process membership applications
- Print/Slide Competitions—assist with setting up for competitions each month
- Programs—assist with planning and organizing monthly presentations and judging sessions
- Publicity—assist with posting monthly meeting announcement in WB and IMF buildings
- Shutter Release* Newsletter—assist editor with production and/or distribution of the monthly newsletter
- Web Publishing—assist with the updates of the IPS Website
- Other: (please specify)

Training, workshops and programs you would like IPS to offer: \_\_\_\_\_

---

Additional comments and ideas are welcomed: \_\_\_\_\_

---

**Signature:** \_\_\_\_\_ **Date:** \_\_\_\_\_

*\*Note to new members: if you joined in April, May or June, you do not have to renew for the new year; you are paid through to the end of the season.*

---