

October 2010

## Inside this issue:

	<u>Page</u>
Presidents Notepad.....	2
October Speaker/Judge.....	2
September Speaker.....	3
Why Join IPS Flickr Group.....	3
PSA Corner .....	4
Workshops & Software Review.....	4
Fieldtrips .....	5
September 2010 Winning Images .....	6
September 2010 Results.....	10
Points Standing .....	11
Notes on IPS Competitions.....	12
Council/Volunteers.....	13
Competition Rules .....	14
Notes on IPS Competitions.....	17
Print Competition Entry Form.....	18
Membership Application Form.....	19

## UPCOMING EVENTS

- Field trip - Philadelphia - City of Brotherly Love, Oct. 23 - 24, 2010
- Software Presentation - Lightroom 3, November 4, 2010
- Workshop - Foundation to Good Composition, November 20, 2010

## Welcome New Members:

**Silpi Chalasani**  
**Philip Liu**  
**Chirag Sanghani**  
**Stephan Eggli**  
**Yulia Snizhko**

## NEXT MEETING:

**Wednesday October 20, 2010**

Social & Refreshments: 5:45 p.m.

Presentation at approx. 6:30 p.m.

**IMF Auditorium, RD-710**

700 19<sup>th</sup> Street, NW, Washington, D.C.

## October Speaker:

**Matt Dunn**

## October Theme:

**OPEN**

## Note to Contestants:

Please bring print entries to the meeting along with a completed entry form – included at end of this newsletter.

Entries will be accepted **ONLY** until 6.15 pm.

For inquiries please call Carlos Franzetti (202) 473-1631



IPS is a member club of the Photographic Society of America ([www.psa-photo.org](http://www.psa-photo.org))

---

## Presidents Notepad:

---

Dear members,

I hope you all had a wonderful summer encompassing family, friends, travel, photography, etc.,

While many of you were enjoying the summer break, several IPS members have been working hard behind the scenes to put things together for the new season. I would like to thank them all, on your behalf, for their continued enthusiasm and willingness to give of their time & effort.

As you know IPS is solely dependent on members' willingness to become actively involved. If you have enjoyed the benefits, then it's time to give back, and help lighten the load on others--the club is what we make it, so let's make it the best it can be.

I would like to take a moment to thank a couple of IPS long-time volunteers/members who have given so much of themselves to make IPS what it is today--Special thanks goes to **Caroline Helou** for handling the Program for the past several years (at least 8 years I've been in IPS, and more). Caroline has decided to hand over the reins this year to Alex Hoffmaister and Richard Quesnel. When I say the "Program" it really doesn't do justice to what is involved in this role. It is a key function of IPS--to find the highest caliber of presenters/judges every month for our meetings--which is no easy feat, and takes months of planning. **On behalf of all the members and the Executive Council--Thank You Caroline.** We look forward to seeing you at future meetings as a participant.

As I said this year's Program Directors are **Alex Hoffmaister and Richard Quesnel**—I am sure they will emulate the great job done by their predecessors. **Thank you gentlemen** for stepping into the role and I look forward to working with you this year.

I would also like to thank **Bill Katzenstein**, who's been writing the Technical Articles for *Shutter Release* for many years and helping with publicity. Bill will be stepping down also, handing the torch to newer members and focusing on his photographic projects, however he has assured me he'll still be around, attending many IPS events. **Thank you Bill** for all the work you have done over the years.

Focusing on the new season now--we plan to have photo classes in the fall and spring, as well as organized field trips. We are also planning to have an overseas field trip next summer--our last one (in 2006) was to Tanzania. Richard will be canvassing members on their interest, so please send him your suggestions.

Our competitions this year will be much the same as last year--Theme and Open for EIC, alternating each month and Prints being always Open (except for January, which is people). However, in February 2011 we will have a special competition for new members (this will be an EIC only competition, and is open to any member who joined after April 2009).

We had our "**Orientation Class**" on September 22<sup>nd</sup> for new members, which was a great success – I hope those who attended benefitted from the experience.

As you have been informed, the IPS exhibit for the IMF – Annual Meetings Secretariat requested an IPS exhibit at this year's IMF/World Bank Annual Meetings—I believe this is a first for the club! The exhibit is on display in the IMF HQ2 Building Second Floor (near the cafeteria entrance) from October 5-10, 2010. Congratulations to all the exhibitors and I hope this becomes an annual event. In addition, we may also be exhibiting at the Spring Meetings—although it's not confirmed yet. I will let you know developments on this front as soon as I know.

A reminder and for new members to note--we have a permanent exhibit space in the HQ1/HQ2 corridor of the IMF. Sigrid Vollerthun (our curator) chose a new set of images to go on display, after the 2010 IPS Annual Exhibit in June--so if you haven't seen them yet, I encourage you to take a look--it is again a great selection of images. **Thank you Sigrid** for your guardianship of this exhibit. Also note that IPS members also have images in the J tunnel and that the Bank is about to begin the selection of replacement images. This will prove to be great opportunities for IPS members.

I am very excited about this year's activities/events and hope you will become more active to ensure that we make 2010/2011 our best year ever. As I mentioned, we are the ones who make IPS what it is, and we are responsible for ensuring it's continued success.

Mary Wilson  
IPS President

---

## October Speaker/Judge:

---

### Matt Dunn

Matt is a DC based photographer originally from the Bronx, NY. Matt's photographic work has been published in the New York Times, Mother Jones, Spin, Washington City Paper and other national publications.

Matt began his photographic work in June, 2000 while attending the Mary Ellen Mark master workshop in Oaxaca, Mexico. He continued pursuing documentary work by attending the Doubletake Documentary Institute at Hampshire College, Amherst, MA, in 2001 and was accepted in 2002 to the prestigious Eddie Adams Workshop, Barnstorm XV, in New York.

---

Matt has worked internationally on a wide range of documentary projects, from former child soldiers in Northern Uganda to painters in Cuba and Haiti. Matt has been a member of the [National Press Photographers Association](#) (NPPA) since 2001

*by Alex Hoffmaister*

---

## September Speaker/Judge:

---

### Patrick Joust Baltimore - City of Contrasts

Patrick grew up and went to school in California. He originally came to Baltimore to work with foster care children who have disabilities and diseases such as HIV and this is when he got into photography. He thought there was a story that needed to be told in this constantly changing city. He now works as a city librarian. For his photography he uses a Single Reflex Twin Lens film camera. This is good for stationary shots but admittedly cumbersome for street action shots. He is not stuck on this square format, but for \$25.00, this little box is quite adequate for film - make that expired 1968 B&W Kodak TriX film (400 ASA), to get that grainy uneven look that give character to his images. He also likes old Ektachrome daylight slides for similar weathered results.

He finds Baltimore to be a city of contrasts - the old and the new as well as the rich and the poor. These two universes are getting wider and wider apart yet they are often located very close geographically, but without interaction. It is these contrasts that he tries to bring out in his pictures.

Patrick particularly likes the effect of shots taken almost in full night and exposed for a long time to make it almost look like the day. For this he photographs with a Yashica Mat because it is a little bit easier to use.

Although not getting political attention, the country has been in a recession for a long time for some sectors of the population. This is especially the case for a growing segment of the Philadelphia population. Patrick does not currently feel this pain in the library system but many clients lost their earning power a long time ago. The economy is so poor in some areas that there are no shopping mall yet small slum corner stores still survive. He likes to photograph them because he is never sure if they are abandoned or not and they have a resilience character of their own. Patrick uses his website to advertize his work and this can be found at: <http://www.pbase.com/patrickjoust>

*by Richard Quesnel*

---

## Why join the IPS Group on Flickr

---

In short, doing so allows you to further enjoy our club. Just check out the IPD group's discussion and see what's going on.

Ever thought of letting the club know about a neat exhibition coming up, or recommend one you have visited? Just post it on IPS Flickr group. What if you plan to take some pictures and would appreciate meeting up with like-minded photographers? Post it on the IPS Flickr group and see if anyone is available to join you.

In any case, I invite you to join the IPS group on Flickr. The group and its "discussions" are simple ways to develop informal links among IPS members. These experiences can help us learn from each other and enjoy our common passion for photography.

To open a free Flickr account; you need to go to <http://www.flickr.com> and sign up. Once you have your account up and running navigate to <http://www.flickr.com/groups/ips> and request joining the group.

P..S. No need to post pictures if you feel uncomfortable with the idea.

*Alex Hoffmaister*

---

## PSA Corner:

---

In May, IPS submitted entries for both the Website and Newsletter PSA competitions. In the website competition we have been notified that we had not been selected among the top honors. We are anxiously awaiting for the judges' comments. This was not so much to win but to see where we ranked and how we can improve our communications to members. To see what other clubs are doing, I have listed the names of the top 6 at the end of this article. The Newsletter winners will be announced at the Annual Conference, held this year in Charleston, SC, from Oct3 to Oct. 9, 2010.

Good news, **Ashih Batheja** will become our new PSA representative effective in October. Ashish recently joined the Society and we are looking forward to reading him in the upcoming issues of SR. The Club Representative gets to know all that is going on in PSA (and IPS Exec Council) and receives a free copy of the PSA Journal. See the PSA website at: <http://www.psa-photo.org>.

As customary, the PSA Journals of August and September contained little jewels of articles. The subjects of the August articles were on: Chasing Elusive Auroras, Bolivia, Creating a Photo Blog, Surfing Photography and special features on Presenters at the Annual Conference. The September issue presented the 2010 awards of Recognition of Member Photographic Achievement within the Society, and had other articles on Harbor Detail photography, the Beautiful Xinjiang province of NW China, the 2010 Youth Showcase, and Getting Great Images at a Hot Air Balloon Festival. Annual membership in the Society is just \$45.00/yr and you get to keep the PSA Journal, which by itself, is well worth it.

Website Placing in the Competition for Clubs with 50+ Members

- 1st Place - Delaware Photographic Society
- 2nd Place - Loveland Photography Society
- 3rd Place - Twin City Camera Club
- HM - Coastal Camera Club
- HM - Lake County Camera Club
- HM - New England Camera Club Council. Inc

by Richard Quesnel

---

## Workshops

---

**Workshops:** This year will hold a few clinics on image management and processing. So we are offering a **Lightroom 3 (Lr3)** overview, based on a program offered by the Photographic Society of America (PSA), which teamed up with Adobe. We received an introductory lessons package prepared by Julieanne Kost for PSA affiliated Clubs to introduce members to **Lr3**. This 2.5 to 3 hour session will be offered on the evening of November 4th, 2010. More will be sent shortly for those interested.

On November 20, 2010, we will conduct a workshop on increasing your seeing potential and on recognizing the stronger compositional elements in your photos. The session will be administered by Members of the Society, and believe me, from the people I have contacted, we can do just as well with our internal resources..

---

## Lightroom 3 Software Review:

---

**Adobe® Photoshop® Lightroom 3 (Lr3):** This **Lr3** article was written by Stan Ashbrook, and appeared in the PSA Journal of August 2010. We abridged it to retain its major elements. It is a good summary of the functionality recently added to the **Lr3** version.

The **Library** module has a completely redesigned import dialog box that makes it more intuitive and faster to import images. The panels on the left side show the sources of the images, the top panel lets you select cataloguing options and the panels on the right let you pick the destination, back-up and keyword options for your imported or copied images. Images can now be seamlessly imported from a memory card or from the computer's hard drive. A new **Compact** view retains all your usual import and destination folder settings (presets) to augment your workflow productivity. The **File Renaming** dialog box offers many new renaming options. The destination panel remembers the location of the last imported images; this makes it really easy to automate the import process. Thumbnail previews, in the middle of the screen, can be double clicked to zoom in and pan around to check focus on an image before importing. A new **Publish** service provides additional direct ways for photographers to share their images either on their own website or public sites such as **Flickr**. **Lr3** allows users to import and manage DSLR video files, as well as take advantage of *tethered shooting* for select **Canon** and **Nikon** cameras.

The **Develop** module now displays **Collections** in a combined panel. A new state-of-the-art technology, designated as "2010", can de-mosaic camera images resulting in sharper images with less noise. The **Local Adjustment** tool is a substantial reason for using **Lr3** and has been enhanced to make it easier for photographers to make local image edits. A new **Automatic Lens Correction** feature can dramatically improve images taken with wide-angle lenses by allowing users to apply profiles that correct for geometric distortions, chromatic aberrations, and lens vignette effects introduced by most wide-angle lenses. **Lr3** supports most **Canon®** and **Nikon®** lenses but for other lens and camera combinations Adobe offers a **Lens Profile Creator** tool, downloadable from **Adobe Labs**. Everything done in the lens correction panel, like elsewhere in **Lr3**, is nondestructive so the user can always restart from any given location. This module now has a **Sync** button to apply any or all corrections made on the previous image to the current image. This is a real time saving feature when processing a series of images taken under similar conditions and camera settings.

---

The *Slideshow* module can now output slideshow videos in high quality HD video, 1080 P. It also includes presets for many different output formats. A (make that one) soundtrack can now be added from the *Playback* panel.

The *Print* module has been simplified to include a new layout style called *Custom Package*, which consists of various sized cells that can be selected or created from a drop-down menu and can be added to the layout. Images are added to a layout by clicking and dragging it from the Film strip to the image area or into a cell. Once added it can be repositioned and/or resized. There are numerous options on how to arrange photos, and each of these can be saved as a Template. **Lr3** can also reorient photos according to sizes to optimize the use of print paper. A *Watermark* capability was added to the *Web*, *Slideshow*, and *Print* modules and on *Export* in the *Library* module. It can be a simple copyright watermark or one that uses a JPEG or PNG image.

*Abridged by: Richard Quesnel, based on article  
Written by Stan Ashbrook,  
PSA Journal, August 2010*

---

## IPS Field Trips

---

This year we plan to have three IPS outings - two overnights (Fall & Spring) and one large one (Late July 2011 - destination still in the works). The Fall destination is Philadelphia and the dates are October 23 and 24. The itinerary, depending on the local weather conditions, will include the Eastern State Penitentiary, Independence Hall, Boathouse Row, Ben Franklin Square, Liberty Bell, the Cleopatra Exhibit at the Franklin Institute and a walk in the Old City. The itinerary will be adjusted to allow as many photographic opportunities as possible within the available timeframe. More information on the itinerary and lodging will be communicated in an upcoming email.

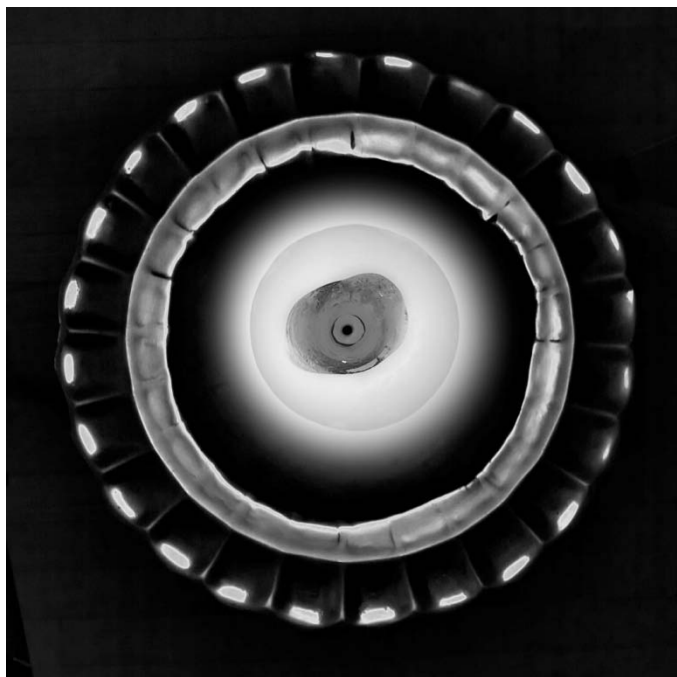
For the Spring and Summer trips, we would like your suggestions. Also, we are looking for suggestions on places and ways to enrich and enliven the field trips. Let me know if there is a special place that would interest you. Contact me at: [rquestnet@comcast.net](mailto:rquestnet@comcast.net).

*by Richard Quesnel*



---

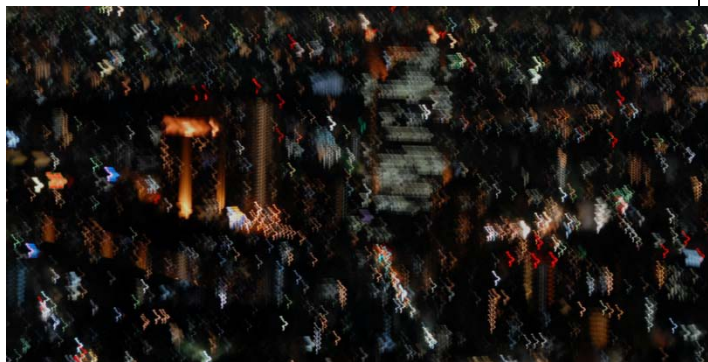
## September 2010—Winning EIC Images



*Candle Interpretation 1* ©Alex Hoffmaister



*Untitled 3* ©Dirk Mevis



*Lights in the Rain* ©Marco Pinon



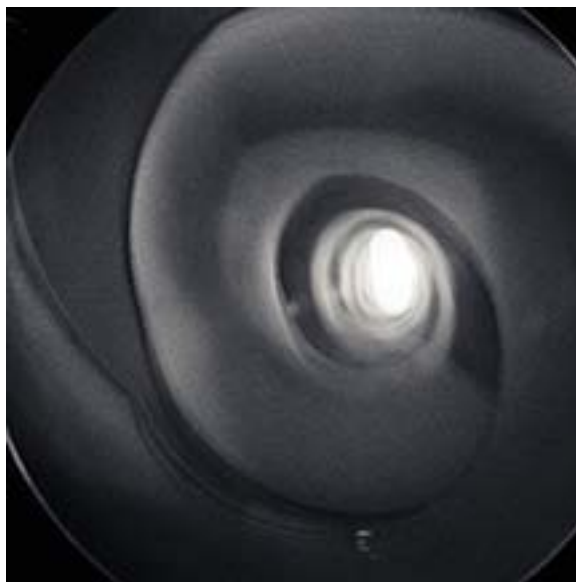
*Orchid* ©Lionel Gahima

---

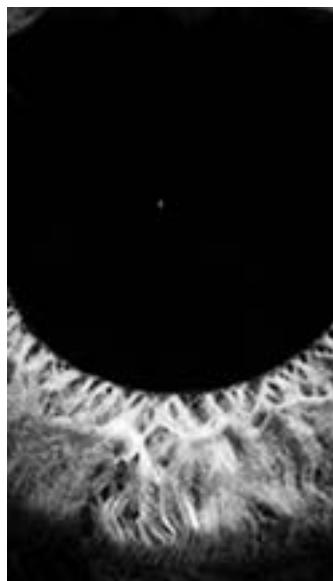
## September 2010—Winning EIC Images (Cont'd)



*Spectrum* ©Manuella Lea Palmioli



*Untitled 2* ©Dirk Mevis



*Visual Reeds* ©RaphaelTitsworth-Morin



*Ballet Dancer* © Yuan Xiao

---

## September 2010—Winning EIC Images (Cont'd)



*Abstract 1* ©Louise Forrest-Sarr



*KBright* ©Louise Forrest-Sarr

## September 2010—Winning Print Images





*Lumley Beach Fisherman* ©Hannah Faux



*Lost and Found* ©Mary Wilson

---

## September 2010 Competition Results:

Electronic Image Competition-Theme: Abstract (Group A – 38 Entries)		
1 <sup>st</sup> place	Alex Hoffmaister	Candle Interpretation 1
2 <sup>nd</sup> place	Dirk Mevis	Untitled 3
3 <sup>rd</sup> place	Marco Pinon	Lights In The Rain 3
HM	Lionel Gahima	Orchid
HM	Manuella Lea Palmioli	Spectrum
HM	Dirk Mevis	Untitled 2
Electronic Image Competition-Theme: Abstract (Group B – 25 Entries)		
1 <sup>st</sup> place	Raphael Titsworth Morin	Visual Reeds
2 <sup>nd</sup> place	Yuan Xiao	Ballet Dancer
3 <sup>rd</sup> place	Louise Sarr	Abstract 1
HM	Louise Sarr	KBright
Prints Competition—OPEN (Group A – 14 Entries)		
1 <sup>st</sup> place	Emine Gorgen	Making Molasses
2 <sup>nd</sup> place	Mary Wilson	Lost and Found
Prints Competition—OPEN (Group B – 9 Entries)		
1 <sup>st</sup> place	Hannah Faux	“Lumley Beach Fisherman”

### Competition Reminder

**No comments or interruptions of any kind from the audience  
are allowed under any circumstances.  
Q and A session will follow the judging**

## IPS POINTS STANDINGS 2010/2011 SEASON

<u>Last Name</u>	<u>First Name</u>	<u>Class Opening</u>	<u>Sep-10</u>	<u>Oct-10</u>	<u>Nov-10</u>	<u>Dec-10</u>	<u>Jan-11</u>	<u>Feb-11</u>	<u>Beg. Comp</u>	<u>Mar.-11</u>	<u>Apr.-11</u>	<u>May-11</u>	<u>Total</u>
Faux	Hannah	B	10										10
Gürgen	Emine	A	10										10
Hoffmaister	Alex	A	10										10
Titsworth	Raphael	B	10										10
Mevis	Dirk	A	9										9
Forest-Sarr	Louise	B	8										8
Wilson	Mary	A	8										8
Xiao	Yuan	B	8										8
Pinon	Marco	A	7										7
Gahima	Lionel	A	6										6
Palmioli	Manuella	A	6										6
Boyd	Jean	A	5										5
Cochard	Fred	A	5										5
Eken	Sena	B	5										5
Ergo	Alex	A	5										5
Franzetti	Carlos	A	5										5
Lundback*	Erik	B	5										5
Machicado	Carmen	A	5										5
Morin	Denyse	B	5										5
Nguyen	Khai	A	5										5
Quesnel	Richard	B	5										5
Rani	Manorama	A	5										5
Simpson	Robert	B	5										5
Thurein Win	Aung	B	5										5
Titsworth	Jack	B	5										5
* Eligible for Rookie of the Year chelou@verizon.net													
Check your awards & score, for questions email:													

**Congratulations to Xiao Yuan for his promotion to Class A**

## NOTES ON IPS COMPETITIONS

- Dates may be subject to change.
- IPS meetings are usually held on the third Wednesday of the month, consisting of a presentation by a renowned photographer who also judges the competition that follows.
- Only IPS members may participate in competition, but attendance in meetings is open to non-members.
- The monthly theme applies to EIC competition only, not to prints (except in January, the mandatory theme is “People” in all Mediums).
- In January, the mandatory theme is “People”.
- Open competitions are on any subject matter in classes B & A.
- Up to a total of 5 images may be submitted, with a max. of 3 images per competition (EIC and Print).
- Five points are awarded for entering the monthly competitions, regardless of the number of entries members actually enter.

### CLASSES — B AND A

All new members begin in class B. Promotion to class A requires 13 awards. Members should keep track of their classes to avoid errors.

### THE POINTS SYSTEM

- **5 points** automatic for entering monthly competition;
- **5 points** for 1<sup>st</sup> place;
- **3 points** for 2<sup>nd</sup> place;
- **2 points** for 3<sup>rd</sup> place;
- **1 point** for Honorable Mention.

In addition, points are given for awards in non-monthly competitions, including the IPS Annual Exhibit and exhibit pre-selection, as follows:

- **7 points** for 1<sup>st</sup> place;
- **5 points** for 2<sup>nd</sup> place;
- **4 points** for 3<sup>rd</sup> place;
- **2 points** for Honorable Mention.

At the end of the season, those with the most points win 1<sup>st</sup>, 2<sup>nd</sup> and 3<sup>rd</sup> place as **Photographer of the Year**. There is also an award for new members who start off in B Class and who gain the most points; it's called **Rookie of the Year**.

### Art 1.7 of the IPS Competition Rules

“Unless otherwise notified, contestants must deliver their print entries to the Chairperson [for Competitions] at least 30 minutes before the competitions commence. Entries must be collected by the contestants after the competition is held. Any uncollected entries will be retained by the Chairperson [for Competitions] without any liability whatsoever for their safekeeping.”

## IPS Competition Themes for 2010/2011

Kindly check Shutter Release or IPS Website

[www.ips-imfwb.org](http://www.ips-imfwb.org) for latest updates

**September 15, 2010: ABSTRACT**—Images where there is no immediately recognizable subject(s) and what stands out is the imagination and creativity of the photographer.

**October 20, 2010: OPEN** in all competitions (except for new members).

**Special Theme for ‘new members’ only: Flowers/Plant and Fruits.** The main focus of the image should be floral or fruits from long lens to macro.

**November 17, 2010: WEATHER**—Rain, wind, snow, fog or mist—Images should illustrate one of the weather phenomena.

**December 15, 2010: OPEN** in all competitions.

**January 19, 2011: PEOPLE (Mandatory)**—Defined as images in which the major point of interest is one or more human beings. It is not sufficient that people are merely included in the image. Excluded are photos of statues, mannequins.

**February 16, 2011: OPEN** in all competitions.

**March 16, 2011: RED/BLUE/GREEN**— where only one of these is the main or dominant color.

**April ??, 2011: OPEN** in all competitions.

**May 18, 2011: DECAY**— Rust, peeling paint or plaster or any interpretation of this subject.

**\*Dates may change dependent on Circumstances outside of our control.**

to be inserted in your camera bag



❑ IPS EXECUTIVE COUNCIL ❑			
<b>President</b>	Mary Wilson	(202) 623 0004	<a href="mailto:MWilson2@imf.org">MWilson2@imf.org</a>
<b>Vice-President</b>	Richard Quesnel	(202) 473-6934	<a href="mailto:rquesnel@worldbank.org">rquesnel@worldbank.org</a>
<b>Treasurer</b>	Aung Thurein Win	(202) 623 5685	<a href="mailto:AWin@imf.org">AWin@imf.org</a>
<b>Director of Programs (Alternate)</b>	Alex Hoffmaister	(202) 623 5883	<a href="mailto:AHoffmaister@imf.org">AHoffmaister@imf.org</a>
	Richard Quesnel	(202) 473 6934	<a href="mailto:rquesnel@worldbank.org">rquesnel@worldbank.org</a>
<b>Director of Membership</b>	Marina Tyapkina	(202) 623 6437	<a href="mailto:MTyapkina@imf.org">MTyapkina@imf.org</a>
<b>Director of Print Competitions</b>	Carmen Machicado	(202) 473-5761	<a href="mailto:Cmachicado@worldbank.org">Cmachicado@worldbank.org</a>
<b>Director of EIC Competitions</b>	Alex Ergo		<a href="mailto:aergo@jhsph.edu">aergo@jhsph.edu</a>
<b>Director of Hospitality</b>	Hannah Faux	(202) 623 8961	<a href="mailto:Hfaux@imf.org">Hfaux@imf.org</a>
<b>Webmaster</b>	Marina Tyapkina	(202) 623 6437	<a href="mailto:MTyapkina@imf.org">MTyapkina@imf.org</a>
<b>PSA Representative</b>	Jean Boyd		
❑ IPS VOLUNTEERS ❑			
<b>Awards and Trophies</b>	Sigrid Vollerthun		<a href="mailto:svollerthun@verison.net">svollerthun@verison.net</a>
<b>EIC Projection</b>	Manuella Lea Palmioli	(202) 473 1630	<a href="mailto:mpalmioli@worldbank.org">mpalmioli@worldbank.org</a>
<b>Competitions-Prints</b>	Carlos Franzetti	(202) 473-1631	<a href="mailto:Cfranzetti@ifc.org">Cfranzetti@ifc.org</a>
	Sigrid Vollerthun		<a href="mailto:svollerthun@verison.net">svollerthun@verison.net</a>
<b>Publicity</b>	Manuella Lea Palmioli	(202) 473 1630	<a href="mailto:mpalmioli@worldbank.org">mpalmioli@worldbank.org</a>
<b>Field Trips</b>	Richard Quesnel	(202) 473-6934	<a href="mailto:rquesnel@worldbank.org">rquesnel@worldbank.org</a>
❑ SHUTTER RELEASE ❑			
<b>Editor</b>	Sophia Woldemichel	(202) 458-5781	<a href="mailto:swoldemicael@worldbank.org">swoldemicael@worldbank.org</a>
<b>Technical Articles</b>	Aquiles Almansi		<a href="mailto:aalmansi@worldbank.org">aalmansi@worldbank.org</a>
<b>Presentation Write-Up</b>	Sena Eken		<a href="mailto:senaeken@gmail.com">senaeken@gmail.com</a>
	Manuella Lea Palmioli	(202) 473-1631	<a href="mailto:mpalmioli@worldbank.org">mpalmioli@worldbank.org</a>
<p><b><i>SHUTTER RELEASE</i> welcomes article ideas and submissions from club members. Unless specified otherwise by e-mail, the deadline for submissions is <u>close of business on the last business day of the month prior to the issue month</u>. Please send submissions by e-mail to the <a href="mailto:editor@imfwb-ips.org">editor@imfwb-ips.org</a> as unformatted word or text files. If you wish to add images, please make sure that the longest side does not exceed 800 pixels.</b></p>			



---

## **COMPETITION RULES REVISED**

---

### **INTERNATIONAL PHOTOGRAPHIC SOCIETY COMPETITION RULES** *(Revised August 2009)*

#### **I. GENERAL**

1.1 These rules apply to all photographic competitions sponsored by the International Photographic Society (IPS). They are adopted, and may be amended, in the same manner as the IPS By-Laws.

1.2 Only members of the IPS may participate in IPS-sponsored competitions.

1.3 The following are competitions sponsored by the IPS:

**Monthly competitions;  
Preselection competition;  
Annual Exhibition competition;**

1.4 The competitions are held under the responsibility of the Chairperson for Competitions; or, in his or her absence, the person designated for the purpose by the President, except for the Annual Exhibition Competition, which is held under the responsibility for the Chairperson for Special Events. All decisions of the person responsible for a competition shall be final, except that a contestant dissatisfied with a decision of the responsible person may request, not later than two weeks after the decision, a ruling by the Executive Council, whose decision shall be final.

1.5 For all electronic image competitions, submitted image files, not to exceed 1.5 MB in size, must be in JPEG format (i.e. with JPG extension) and in sRGB color space (even if monochrome) with a maximum horizontal size of 1400 pixels and maximum vertical size of 1050 pixels.

1.6 For all print competitions, prints shall be mounted on a board not exceeding 30 x 30 inches. A print may have an overlay mat, provided it is securely fixed to the mount.

1.7 Unless otherwise notified, contestants must deliver their print entries to the Chairperson at least half an hour before the competitions commence. Entries must be collected by the contestant after the competitions are held.

Any uncollected entries will be retained by the Chairperson without any liability whatsoever for their safekeeping.

1.8 In any competition, the image presented must be, or be based on, an original photograph or combination of photographs taken by the member. A contestant may enter only one picture of essentially the same image. No other picture taken at about the same time, of the same subject, from the same position, and under similar lighting, may be entered in the same competition.

1.9 The IPS shall exercise all reasonable care in the handling and storage of entries, but the IPS accepts no responsibility for any loss of, or damage to, an entry.

#### **II. MONTHLY COMPETITIONS**

2.1 The Executive Council determines and publishes before the beginning of the season, which runs from September through May,

- (a) the dates of the monthly competitions may be changed and members notified in the course of the season if this becomes necessary in the judgment of the Executive Council;
- (b) the type of competitions such as prints, and electronic by class that will be held each month, as well as the theme;
- (c) the maximum number of entries which each contestant may submit each month is 5. The maximum entry in each media is limited to 3.

2.2 A picture should be entered in an IPS monthly competition no more than three times in one calendar year. Winners from a monthly competition, including honorable mentions, cannot be resubmitted. Winners from the Preselection competition can no longer be entered in monthly competitions.

2.3 Contestants are divided into two classes: Class B and Class A.

Class B will comprise:

- (a) members who have never entered a competition in the IPS;
- (b) members who have won fewer than thirteen awards while competing in Class B.

Class A will comprise:

- (a) members who have been promoted from Class B as having won thirteen awards while competing in Class B; and
- (b) members to whom Rule 2.4 applies.

---

2.4 Class A members who rejoin the IPS after an absence of a year or more will retain the class standing at the time of their departure.

2.5 Competitions may be held within each class or between all classes combined. For the purposes of determining the classes and movements between classes, awards won in the monthly competitions, the Annual Exhibition, and the Preselection competition are taken into account.

2.6 Points System: Regardless of the number of entries submitted, each contestant entering a monthly competition receives 5 points – even if there are not enough entries to actually hold that competition.

2.7 IPS awards are given for the best fifteen percent (rounded to the nearest whole number) of entries in each competition or in each class within a competition that is run in classes. These awards, and the points they earn are:

- (a) Places, meaning those pictures judged first, second and third which earn 5, 3, and 2 points respectively; and
- (b) Honorable Mentions, meaning all other pictures selected for award which earn 1 point each

2.8 If, in any competition, there are fewer than five entries, or fewer than three contestants, there shall be no competition. If this is the case in class competitions, entries received for Class B shall be included with the entries of Class A; entries received for Class A will be displayed without competition.

### **III. THE ANNUAL EXHIBITION**

3.1 For each season, the Executive Council shall determine or delegate the Manager of the Annual Exhibition to determine:

- (a) the dates of the Annual Exhibition;
- (b) the total number of prints to be exhibited, the maximum number of electronic images, or prints members may submit for Preselection, and the number of pictures to be chosen by Preselection;
- (c) the members of the Preselection panel and the Annual Exhibition jury;
- (d) the deadline for submitting pictures;
- (e) the amount to be paid by members to cover the cost of printing, mounting, handling, and other costs associated with the Annual Exhibition.

3.2 The Annual Exhibition shall consist of one single category, irrespective of the original media of the photograph.

3.3 The following entries submitted by members shall be exhibited and shall be considered for award:

- (a) All winners of awards in monthly competitions since the last Annual Exhibition;
- (b) All electronic images and prints submitted by members, which have been selected by the Preselection panel.

3.4 A picture may not be exhibited more than once, even if entered in a different category, or if it qualifies under a different rule (e.g., a picture exhibited as an electronic image one year may not be exhibited as a print in another year, a monthly winner may not be exhibited as such one year, and be submitted to the Annual Exhibit Preselection panel in another year).

3.5 Annual Exhibition Competition. All entries will be judged in one category. Fifteen percent of the entries will receive awards, which shall be, at a maximum, a first, second, and third place, and as many honorable mentions (not ranked among themselves) as required to give awards to fifteen percent of entries.

3.6 Winners of places or honorable mentions in the Preselection competition as well as the Annual Exhibit win points as in Rule 3.7 below.

3.7 Points system for non-monthly competitions: winners of places or honorable mentions in the Annual Exhibition, the Preselection competitions, or any other competition sponsored by the IPS, will be awarded points as follows:

- (a) for first, second, and third place winners: 7, 5 and 4 points respectively;
- (b) for honorable mentions: 2 points

### **IV. PHOTOGRAPH/ROOKIE OF THE YEAR**

4.1 At the end of the season, points earned by each member in a season are added. The member awarded the highest number of points in the season will be declared Photographer of the Year. Second and third place awards will also be made.

4.2 New members who have joined the IPS during the current or the previous season shall be eligible for the Rookie of the Year award. Members who, at any time previously, have attained Class A status are not eligible.

---

4.3 Second and third place awards will also be made. If the Rookie of the Year also has enough points to qualify for first place in the Photographer of the Year he/she will be declared Photographer of the Year and the Rookie of the Year award will go to the eligible members with the next highest points. If the Rookie of the Year also has enough points to qualify for second or third place in the Photographer of the Year award he/she will be declared Rookie of the Year; and second and third places will then go to the members, as define in paragraph 4.2, with the next highest points.

**(Adopted March 1966, and amended August 1966, March 1968, October 1969, October 1971, September 1979, November 1979, September 1981, May 1984, October 1986, February 1987, February 1988, March 1989, October 1989, May 1991, September 1991, May 1992, May 1998, June 2000, May 2004, August 2007, and March 2008 and August 2009)**

## NOTES ON IPS COMPETITIONS

- Dates may be subject to change.
- IPS meetings are usually held on the third Wednesday of the month, consisting of a presentation by a renowned photographer who also judges the competition that follows.
- Only IPS members may participate in competition, but attendance in meetings is open to non-members.
- The monthly theme applies to EIC competition only, not to prints (except in January, the mandatory theme is “People” in all Mediums).
- In January, the mandatory theme is “People”.
- Open competitions are on any subject matter in classes B & A.
- Up to a total of 5 images may be submitted, with a max. of 3 images per competition (EIC and Print).
- Five points are awarded for entering the monthly competitions, regardless of the number of entries members actually enter.

### CLASSES — B AND A

All new members begin in class B. Promotion to class A requires 13 awards. Members should keep track of their classes to avoid errors.

### THE POINTS SYSTEM

- **5 points** automatic for entering monthly competition;
- **5 points** for 1<sup>st</sup> place;
- **3 points** for 2<sup>nd</sup> place;
- **2 points** for 3<sup>rd</sup> place;
- **1 point** for Honorable Mention.

In addition, points are given for awards in non-monthly competitions, including the IPS Annual Exhibit and exhibit pre-selection, as follows:

- **7 points** for 1<sup>st</sup> place;
- **5 points** for 2<sup>nd</sup> place;
- **4 points** for 3<sup>rd</sup> place;
- **2 points** for Honorable Mention.

At the end of the season, those with the most points win 1<sup>st</sup>, 2<sup>nd</sup> and 3<sup>rd</sup> place as **Photographer of the Year**. There is also an award for new members who start off in B Class and who gain the most points; it's called **Rookie of the Year**.

### Art 1.7 of the IPS Competition Rules

“Unless otherwise notified, contestants must deliver their print entries to the Chairperson [for Competitions] at least 30 minutes before the competitions commence. Entries must be collected by the contestants after the competition is held. Any uncollected entries will be retained by the Chairperson [for Competitions] without any liability whatsoever for their safekeeping.”

## IPS Competition Themes for 2010/2011

Kindly check Shutter Release or IPS Website  
[www.ips-imfwb.org](http://www.ips-imfwb.org) for latest updates

**September 15, 2010: ABSTRACT**—Images where there is no immediately recognizable subject(s) and what stands out is the imagination and creativity of the photographer.

**October 20, 2010: OPEN** in all competitions (except for new members).

**November 17, 2010: WEATHER**—Rain, wind, snow, fog or mist—Images should illustrate one of the weather phenomena.

**December 15, 2010: OPEN** in all competitions.

**January 19, 2011: PEOPLE (Mandatory)**—Defined as images in which the major point of interest is one or more human beings. It is not sufficient that people are merely included in the image. Excluded are photos of statues, mannequins.

**February 16, 2011: OPEN** in all competitions.

**Special Theme for ‘new members’ only: Flowers/Plant and Fruits.** The main focus of the image should be floral or fruits from long lens to macro.

**March 16, 2011: RED/BLUE/GREEN**— where only one of these is the main or dominant color.

**April ??, 2011: OPEN** in all competitions.

**May 18, 2011: DECAY**— Rust, peeling paint or plaster or any interpretation of this subject.

**\*Dates may change dependent on Circumstances outside of our control.**

to be inserted in your camera bag



---

# INTERNATIONAL PHOTOGRAPHIC SOCIETY

## COMPETITION ENTRY FORM

*(Please complete and submit with your entries)*

---

**Name:** \_\_\_\_\_ **Class:** \_\_\_\_\_  
**Room:** \_\_\_\_\_ **Phone:** \_\_\_\_\_ **Month:** \_\_\_\_\_  
**Theme:** \_\_\_\_\_

Note: Monthly competition winning photos will be used on the IPS web site and in “Shutter Release” Newsletter. If you do **not** wish to have your images posted on the website or in *Shutter Release* please indicate by checking the box:

☐

	Title	Category (check one for each photo)			
		Print		EIC	
		Theme	Open	Theme	Open
1				<b>No form required</b>	
2					
3					
4					
5					
<b><i>Five entries per member. Maximum of 3 entries per medium (EIC and Print)</i></b>					

### **GUIDELINES FOR SUBMISSION**

#### **PRINTS**

- All prints must be mounted or matted, with the title of the photo and the name of the maker affixed on the back along with an arrow indicating this edge up. Neither the name of the maker nor the title of the print may appear on the face of the print or mat. Mats that fall apart will be disqualified. No loose or framed prints will be accepted for competition.
- Maximum size of mounted or matted prints is 30”x30”.

#### **DIGITAL**

All images must be sent to [EIC@ips-imfwb.org](mailto:EIC@ips-imfwb.org), Friday before the IPS meeting which takes place on 3<sup>rd</sup> Wednesday of each month.



---

# INTERNATIONAL PHOTOGRAPHIC SOCIETY

## MEMBERSHIP APPLICATION\*

Annual Membership Fee: \$30. Please send checks, payable to the *International Photographic Society*, to: Marina Tyapkina (IMF), Room HQ1 2-300, 700 19<sup>th</sup> Street, NW, Washington D.C. 20431

[www.ips-imfwb.org](http://www.ips-imfwb.org)

☐ NEW APPLICATION

☐ RENEWAL

Last Name: \_\_\_\_\_ First Name: \_\_\_\_\_

☐ IMF    ☐ World Bank    ☐ Spouse/Domestic Partner    ☐ Retiree (**please check one**)

Phone No.: \_\_\_\_\_ Mail stop: \_\_\_\_\_

Email: \_\_\_\_\_ (**required**)

Mailing address (if outside Fund/Bank): \_\_\_\_\_

\_\_\_\_\_

**IPS is run solely by member volunteers.** We rely on each member to volunteer for **at least one** activity per year (several volunteers are needed for each item). **Please indicate below which activities you can help with:**

### I can volunteer for the following activities:

- ☐ Annual Exhibit—assist with all aspects of organizing the exhibit
- ☐ Classes/Workshops/Field Trips—assist in the organization of these educational events
- ☐ Monthly Electronic Image Competition—receive images via e-mail, compile into slide show and run on competition night
- ☐ Hospitality—assist with refreshments prior to our monthly meetings
- ☐ Membership—maintaining database of members, process membership applications
- ☐ Print/Slide Competitions—assist with setting up for competitions each month
- ☐ Programs—assist with planning and organizing monthly presentations and judging sessions
- ☐ Publicity—assist with posting monthly meeting announcement in WB and IMF buildings
- ☐ *Shutter Release* Newsletter—assist editor with production and/or distribution of the monthly newsletter
- ☐ Web Publishing—assist with the updates of the IPS Website
- ☐ Other: (please specify)

Training, workshops and programs you would like IPS to offer: \_\_\_\_\_

\_\_\_\_\_

Additional comments and ideas are welcomed: \_\_\_\_\_

\_\_\_\_\_

**Signature:** \_\_\_\_\_ **Date:** \_\_\_\_\_

*\*Note to new members: if you joined in April, May or June, you do not have to renew for the new year; you are paid through to the end of the season.*

---